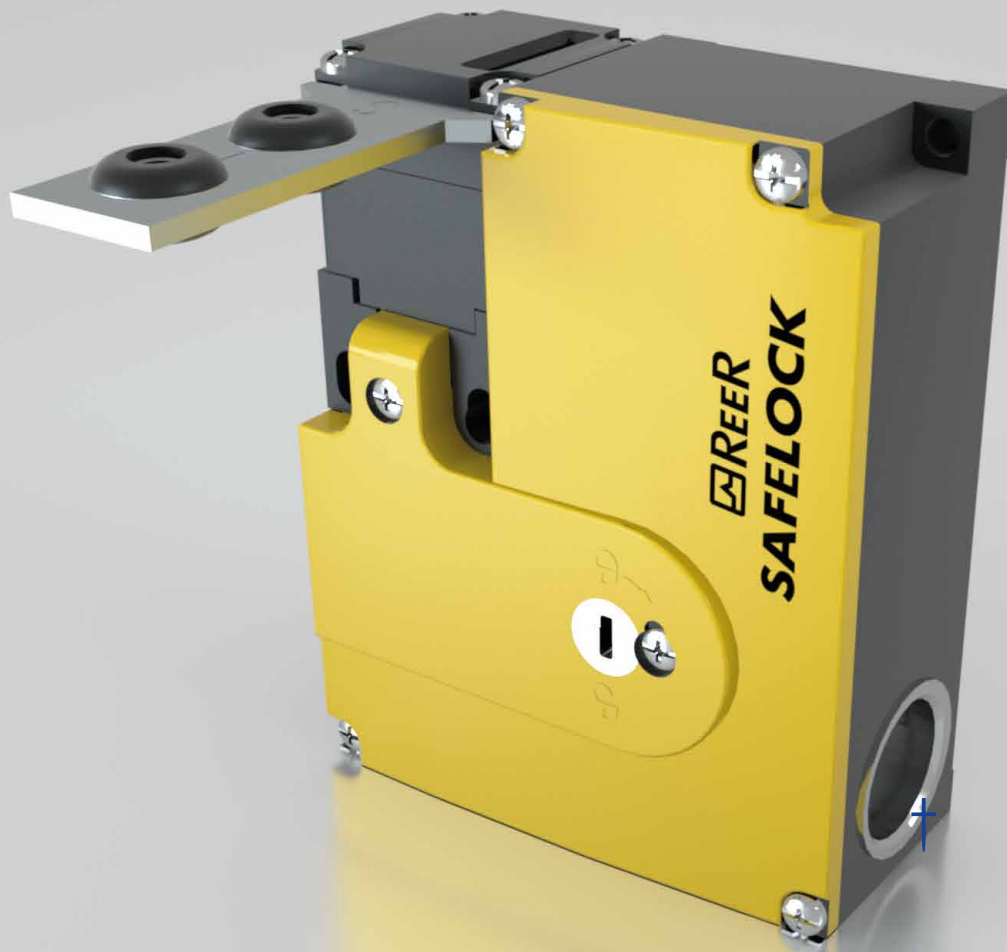




Your future's safe!



SAFELOCK

safety switch with guard locking

Short form

Safety switch with guard locking

Safety and reliability in door-opening control

Safelock is a safety switch utilised in the protection of personnel when opening doors leading to dangerous areas. It acts by monitoring and interrupting the safety circuit during dangerous scenarios.

The solenoid locks and unlocks access to the dangerous area, guaranteeing safety until the danger has stopped.

Available models

SLK-M

Retention mechanism actuated by a spring and unlocked by ON current.

Guard locking by spring force, release by applying voltage to the guard locking solenoid.

SLK-E

Retention mechanism actuated by ON current and unlocked by spring.

Guard locking by applying voltage to the guard locking solenoid, release by spring force.



Approvals

Directives
Machine Directive 2006/42/CE

Standards
EN 60947-5-1:2004 + Cor.:2005 + A1:2009
EN 1088:1995 + A2:2008
EN 14119:2013

Characteristics

■ Housing	Reinforced thermoplastic	■ Solenoid operating voltage	24 V AC/DC -15% ... +10%
■ Actuating head material	Plastic or metal	■ Short circuit protection	4 A
■ Contact material	Silver alloy, gold flashed	■ Switching voltage	12 V Min a 10 mA
■ Number of guided contacts (door position)	2	■ Switching current	1 mA Min a 24 V
■ Number of guided contacts (block monitoring)	1	■ Power consumption	6 W
■ Approach speed	Max. 20 m/min	■ Protection grade	IP67
		■ Actuation frequency	1200 1/h

Forces

Locking force (Fmax): Retention force: 20 N
≥1 kN (plastic), ≥2 kN (metal)

Locking force (FZh): 1,5 kN Extraction force: 30 N
0,7 kN (plastic), 1,5 kN (metal)

Actuating force: 35 N

Models

SLK-M-P-2NC-24

Safelock with mechanical block and plastic actuating head.
Contacts: 2 NC, feedback 1 NC

SLK-M-M-2NC-24

Safelock with mechanical block and metal actuating head.
Contacts: 2 NC, feedback 1 NC*

SLK-E-P-2NC-24

Safelock with electrical block and plastic actuating head.
Contacts: 2 NC, feedback 1 NC

SLK-E-M-2NC-24

Safelock with electrical block and metal actuating head.
Contacts: 2 NC, feedback 1 NC*

* Contact ReeR to check availability

Actuators

ACT-S-S-RB



Straight actuator.
With rubber bush, overtravel 5 mm (incl. 2 safety screws M4 x 14)

Part Number: 1290302

ACT-S-A-RB



Angled actuator.
With rubber bush, overtravel 5 mm (incl. 2 safety screws M4 x 14)

Part Number: 1290303

ACT-S-H-TB



Hinged actuator.
For top and bottom hinged doors, overtravel 5 mm (incl. 2 safety screws M5 x 25)

Part Number: 1290304

ACT-S-H-LR



Hinged actuator.
For left and right hinged doors, overtravel 5 mm (incl. 2 safety screws M5 x 10)

Part Number: 1290305

SAFELOCK



Your future's safe!

More than 60 years of quality and innovation

Founded in Turin, Italy in 1959, ReeR distinguished itself for its strong commitment to innovation and technology.

A steady growth throughout the years allowed ReeR to become a point of reference in the safety automation industry at a worldwide level.

The Safety Division is in fact today a world leader in the development and manufacturing of safety optoelectronic sensors and controllers.

ReeR is ISO 9001, ISO 14001 and ISO 45001 certified.



ReeR SpA

Via Carcano, 32
10153 Torino, Italy

T +39 011 248 2215

F +39 011 859 867

reersafety.com | info@reer.it



Issue 4 - Rev. 1.0
February 2024
8946246
Brochure SAFELOCK - English
Printed in Italy

ReeR SpA does not guarantee that product information in this catalogue are the most current available. ReeR SpA reserves the right to make changes to the products described without notice and assumes no liability as a result of their use or application. Our goal is to keep the information on this catalogue timely and accurate, however ReeR SpA accepts no responsibility or liability whatsoever with regard to the information on this catalogue. Reproduction is not authorised, except with the expressed permission of ReeR SpA.